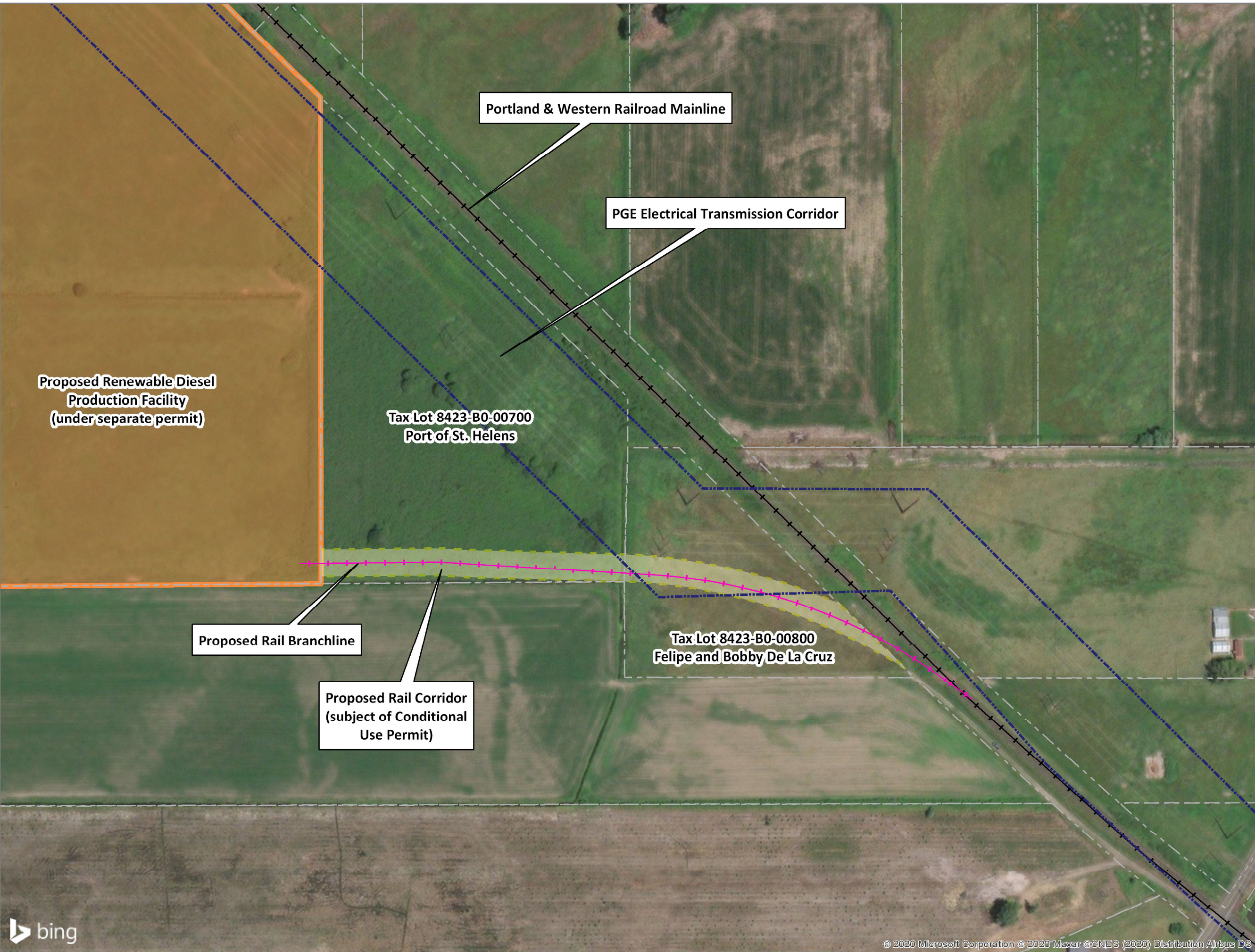
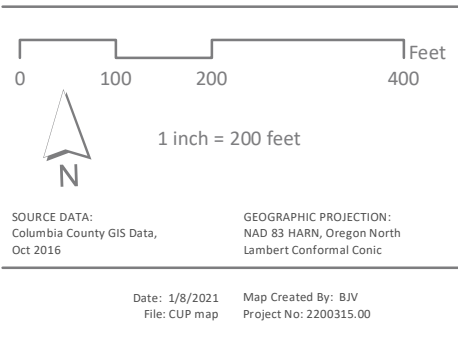


**NEXT RENEWABLE
FUELS INC.**
Columbia County, Oregon
Proposed Rail Spur

- LEGEND**
- Tax Lots
 - PGE Electrical Transmission Corridor
 - Proposed Rail Corridor
 - Proposed Rail Branchline
 - Existing Rail Mainline
 - Proposed Renewable Diesel Production Facility (under separate permit)

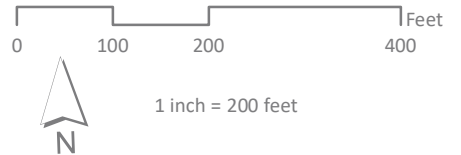


NEXT RENEWABLE
FUELS INC.
Columbia County, Oregon
Proposed Rail Spur
Zoning Map

LEGEND

- Tax Lots
- Proposed Rail Corridor
- Proposed Rail Branchline
- Existing Rail Mainline
- Proposed Renewable Diesel Production Facility (under separate permit)

- Zoning
- RIPD Resource Industrial-Planned Development
 - PA-80 Primary Agriculture



SOURCE DATA: Columbia County GIS Data, Oct 2016
GEOGRAPHIC PROJECTION: NAD 83 HARN, Oregon North Lambert Conformal Conic

Date: 1/8/2021
File: CUP zoning map
Map Created By: BJV
Project No: 2200315.00



MACKENZIE.

P 503.224.9560 • F 503.228.1285 • W MCKNZE.COM
RiverEast Center, 1515 SE Water Avenue, #100, Portland, OR 97214

Portland, Oregon • Vancouver, Washington • Seattle, Washington

© 2014 MACKENZIE ALL RIGHTS RESERVED

